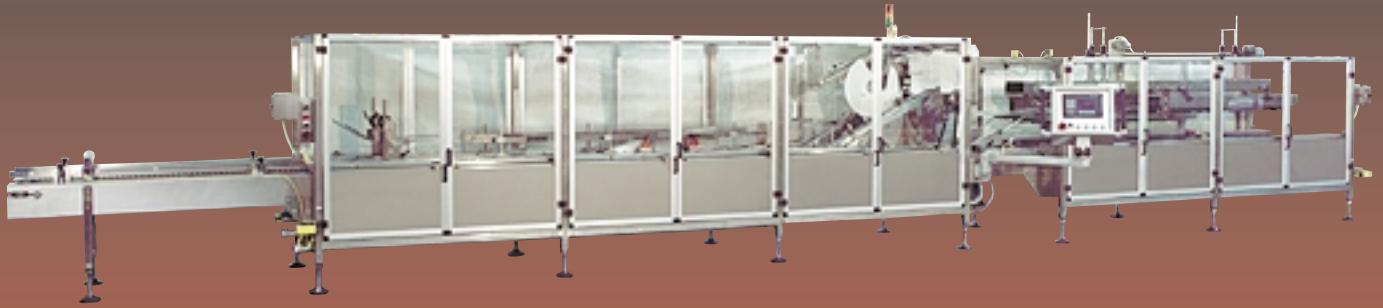


Slitter/Sealer



Standard Knapp

Slitter/Sealer Benefits

HIGH EFFICIENCIES

- Pitch adjustment with servo motors ensures precise timing and eliminates operator error
- Positive product timing with innovative infeed design
- Designed with fewer moving parts to reduce downtime
- Continuous motion, inline case handling permits speed in excess of 80 cases per minute



In-line machine design eliminates the need to turn the case when slitting the tab-locks on incoming cases.

SIMPLE OPERATION

- User-friendly touch screen control panel
- Ergonomic operator screen swings to convenient position where needed
- Convenient Job Training Aid (JTA) quick-reference booklet guides new operators
- Operations and maintenance manuals available on CD-ROM



LOW-MAINTENANCE DESIGN

- Rust-proof stainless steel frame does not require painting
- Guard doors are interlocked optically with a photo beam which, when broken, triggers a machine stop
- Servos replace high-maintenance cams and chains
- Continuous motion design reduces "impact" wear



Fewer moving parts make the width of the entire machine adjustable using one hand crank.

EASY TIMING AND ADJUSTMENT

The entire machine process is controlled by three servo motors and two variable drives.

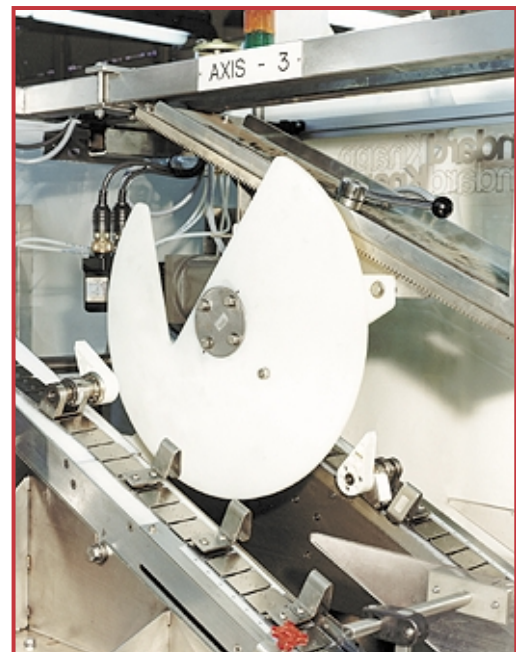
- Two servos time and transport cases through the infeed
- Pitch is easily adjusted during changeover – servos home to the new pitch with the press of a button
- Third servo motor controls the trailing flap tucker, allowing an optimal speed profile as cases advance
- Main variable drive controls case motion through the knife section and into the flap closing section
- Touch screen control panel is used to control speed of the case drive in the case sealing section

QUICK AND POSITIVE CHANGEOVER

- One operator can complete changeover in under 15 minutes
- No tools or change parts needed
- Infeed pitch timing is changed with the push of a button
- To eliminate guesswork, each changeover point is numbered, and corresponding settings are documented on chart provided with machine



No-tools changeover can be completed in less than 15 minutes, by one operator.



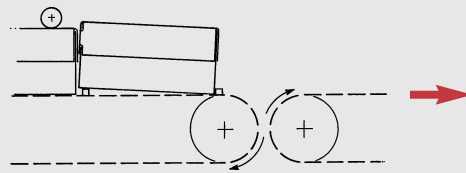
Teardrop and Pac Man Section

Slitter/Sealer

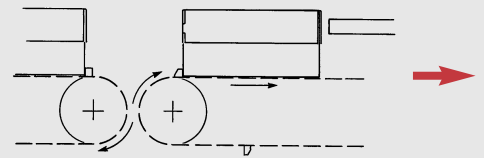
Description of Operation



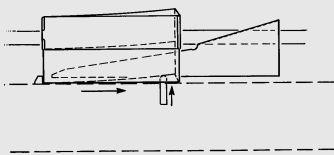
Product Flow



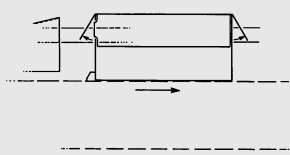
Infeed Timer meters cases onto Main Flight Chain



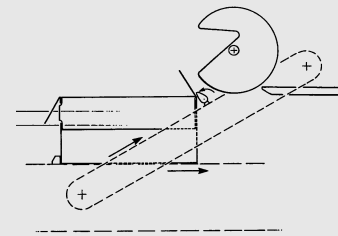
Main Flight Chain transports cases through Slitting Section



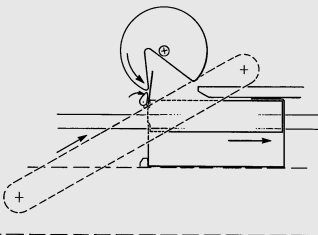
Warping Lugs lift case to expose Tab-Locks



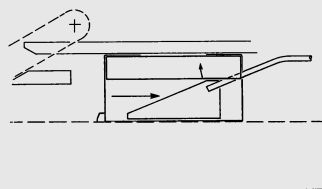
Cases are lowered onto Knife Guide to free minor flaps



Teardrop Lugs position leading minor flaps to be rolled down by Pac Man



Trailing Teardrop positions trailing minor flap to be plowed into place by mouth of Pac Man



Major Flaps positioned for application of Hot Melt



StandardKnapp

STANDARD-KNAPP, INC.

127 Main Street, Portland, CT 06480 U.S.A.

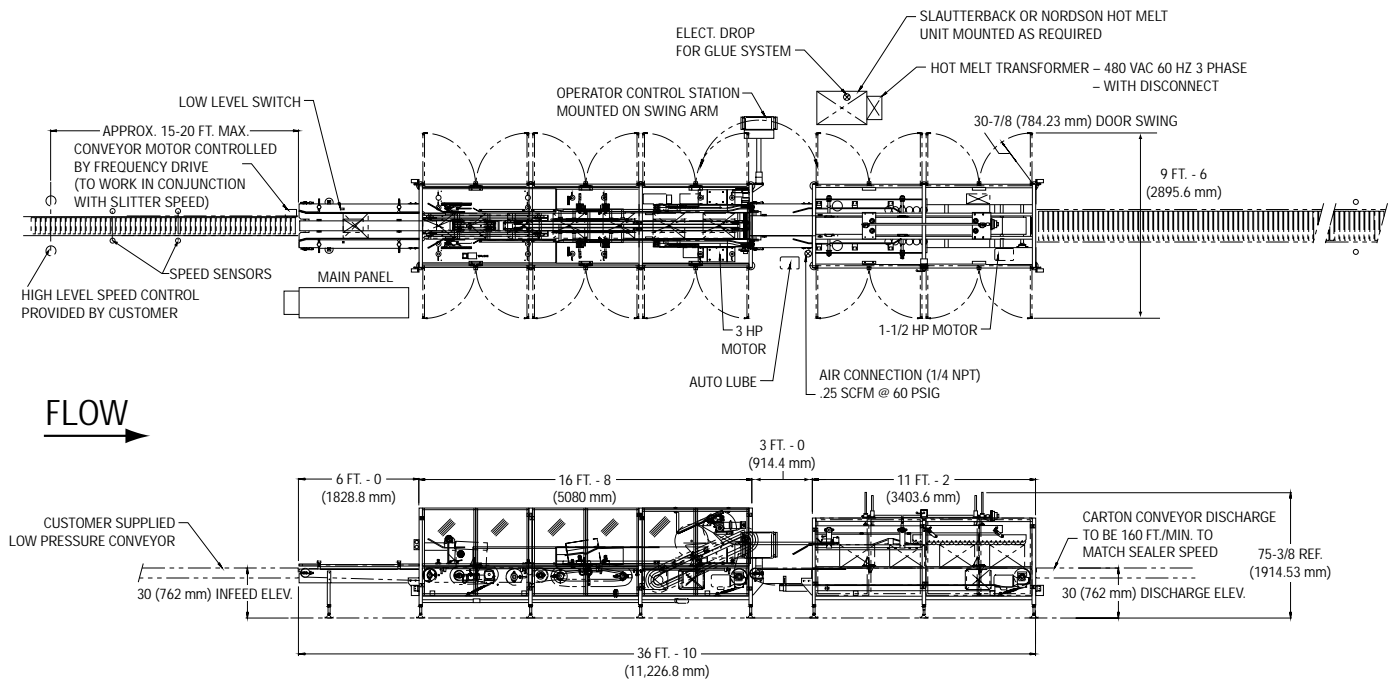
SALES PHONE: (860) 342-1100, ext. 239

SALES FAX: (860) 342-1557

EMAIL: info@standard-knapp.com

WEB SITE: www.standard-knapp.com

Slitter/Sealer Floor Plan



Specifications*

Speed:

80 CPM max.

Case Specifications:

Corrugated, RSC (with tab-lock flaps 1 1/2" tab max.)

Case Dimensions: (min.-max.)

Length: 12"-20"
Width: 8"-15"
Height: 6"-13"

Voltage:

230/460-60-3

Control Voltage:

24 VDC

Power Supply:

Acopian 24 VDC

Remote Electrical Panel:

NEMA 12

Junction Boxes:

NEMA 4X

Operator Interface:

PanelView 600 (Data Highway +)

Motors:

Reliance XEX, 3 HP on Slitter and Sealer

Variable Frequency Drive:

Allen-Bradley 1305 RIO on Slitter motor (Sealer drive is fixed speed)

Processor:

Allen-Bradley PLC 5

Servo:

Giddings & Lewis

Guard Door Interlocks:

Infrared, optic light beam

Hot Melt Unit:

Slautterback or Nordson

Proximity Switches:

Turck with Eurofast quick-disconnect cords

Photoeyes:

PhotoSwitch with Brad Harrison quick-disconnect cords

Utility Consumption:

Power: 25 KWH
Air: negligible

Stainless Steel Construction

*Standard-Knapp is committed to continuous product improvement. Specifications are subject to change without notice.



Standard Knapp

STANDARD-KNAPP, INC.

127 Main Street, Portland, CT 06480 U.S.A.

SALES PHONE: (860) 342-1100, ext. 239

SALES FAX: (860) 342-1557

EMAIL: info@standard-knapp.com

WEB SITE: www.standard-knapp.com