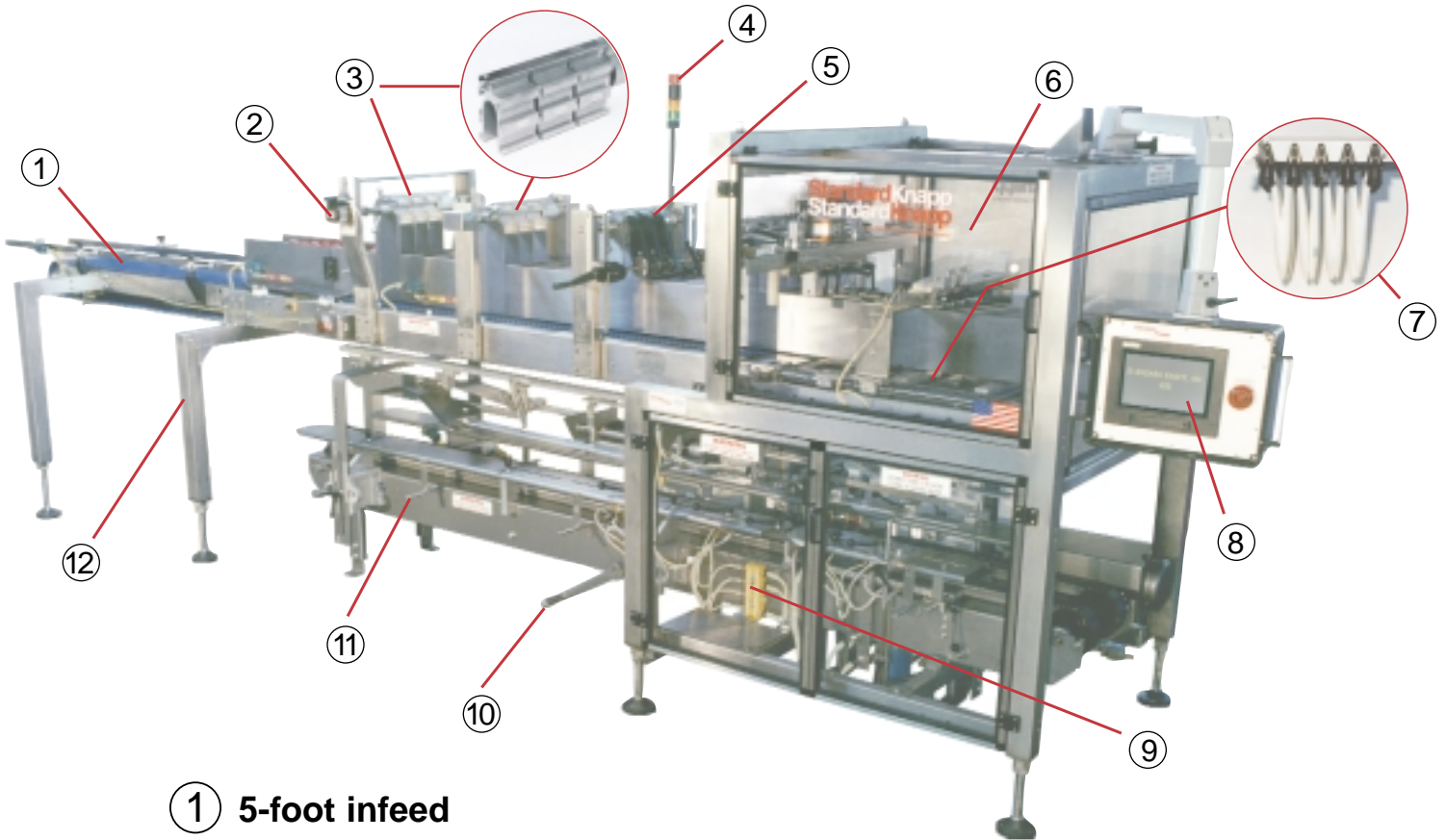


Versatron Case Packer



StandardKnapp

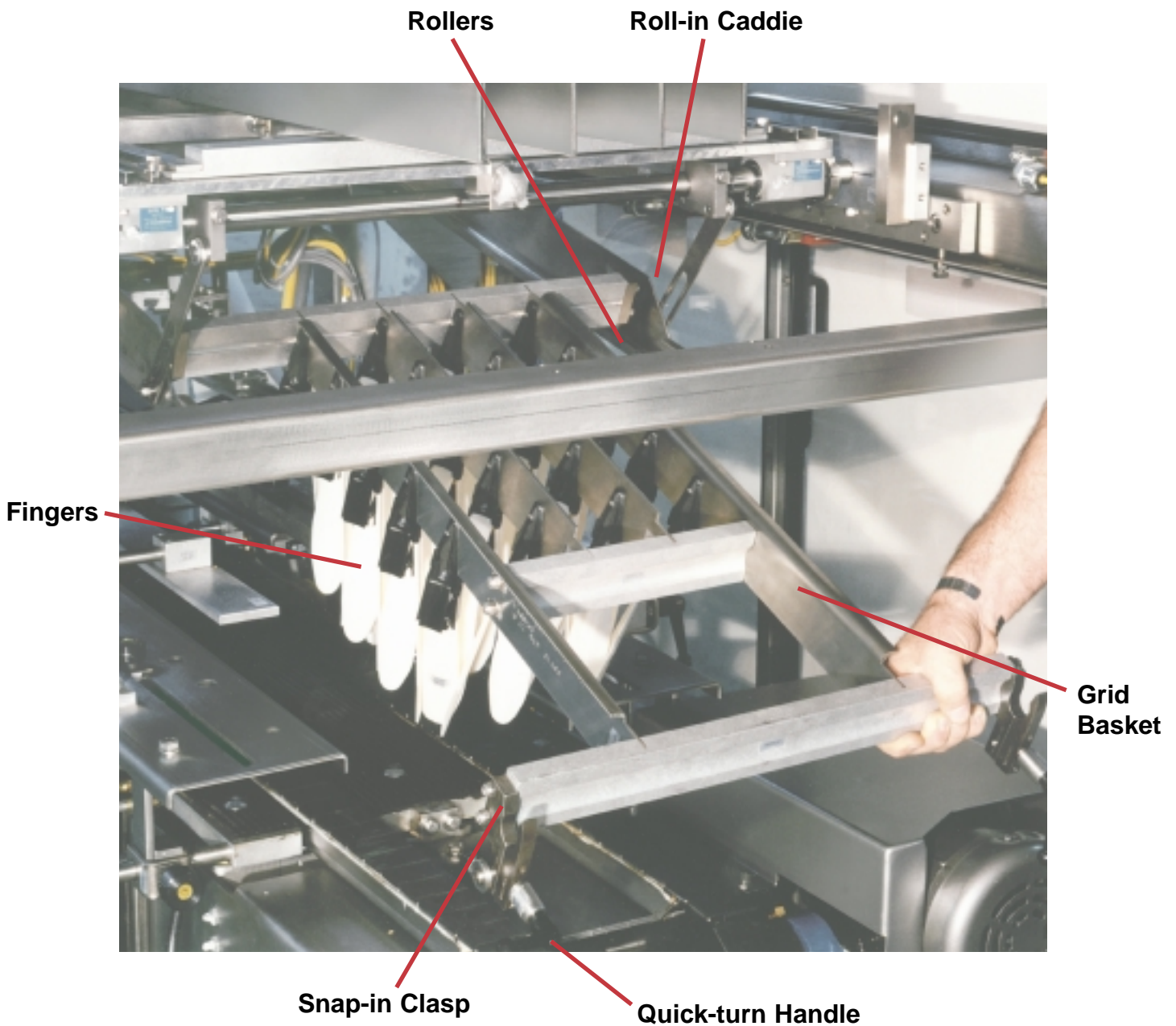
Versatron Features



- ① 5-foot infeed
- ② On-demand oscillator
- ③ "No-tools" lane dividers
- ④ Alert beacon
- ⑤ Down product detectors
- ⑥ Guards – full length
- ⑦ Snap-in grid
- ⑧ Optional touch screen operator interface
- ⑨ Quick disconnect wires for control devices
- ⑩ Quick-adjust handles
- ⑪ Optional flap opener
- ⑫ Sturdy stainless steel construction



STANDARD-KNAPP, INC.
127 Main Street, Portland, CT 06480 U.S.A.
SALES PHONE: (860) 342-1100, ext. 239
SALES FAX: (860) 342-1557
EMAIL: info@standard-knapp.com
WEB SITE: www.standard-knapp.com



Standard-Knapp introduced the packaging industry to grid-style packers and has since developed and advanced the grid and grid finger technology. Fingers may be plastic or stainless steel, depending upon the application.

The "snap-in grid basket" eliminates the need for hoists and allows one attendant to remove and replace the grid during changeover. This system is fast and efficient. The "roll-in caddie" design makes changeover simple by allowing the grid to roll in and snap up into place.

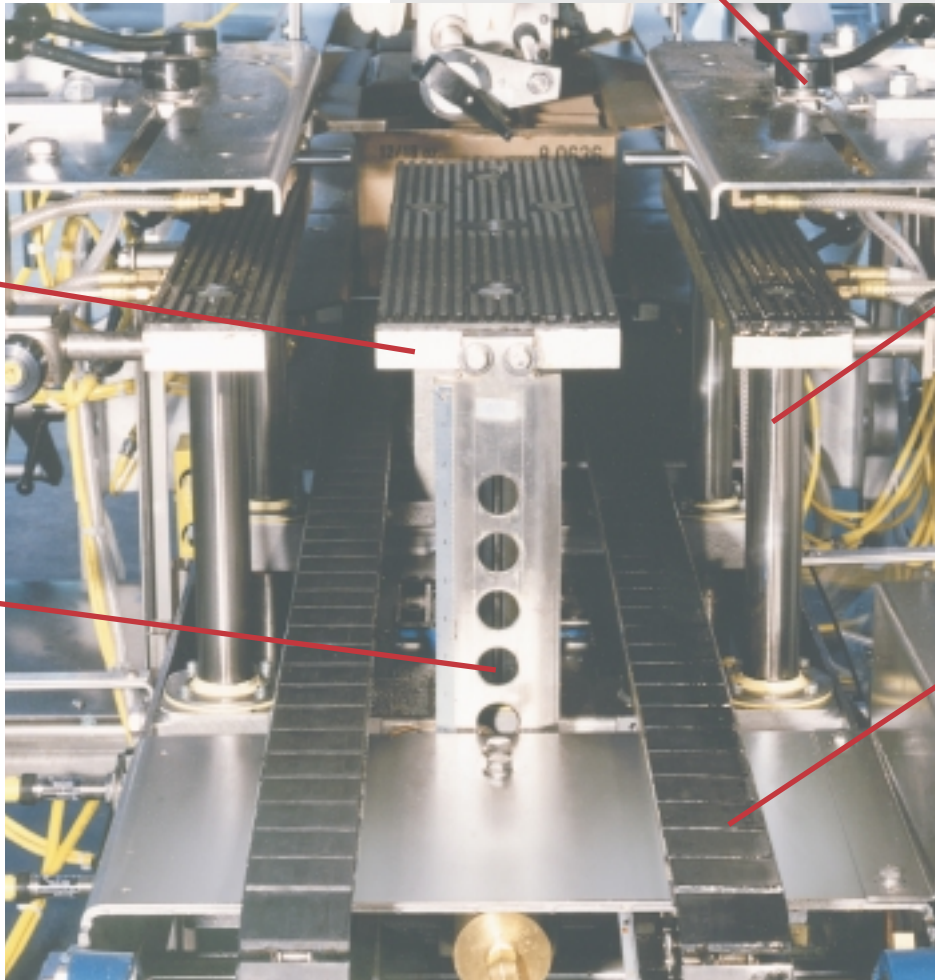
Options

- Narrow case feed
- Indexing case feed
- Tandem case handling
- Non-round product handling
- Flap opener
- Touch screen operator interface
- Right angle, in-line or counter flow case handling

Quick-adjust handles eliminate the need for tools.

Heavy-duty construction makes this the most durable lift table in the industry.

These peg holes and a solenoid allow an immediate table stop in the event of an E-stop or power down.



Two Thompson linear shafts provide exact alignment and years of maintenance-free operation.

Either rubber coated chain or stainless steel chain is available upon request.

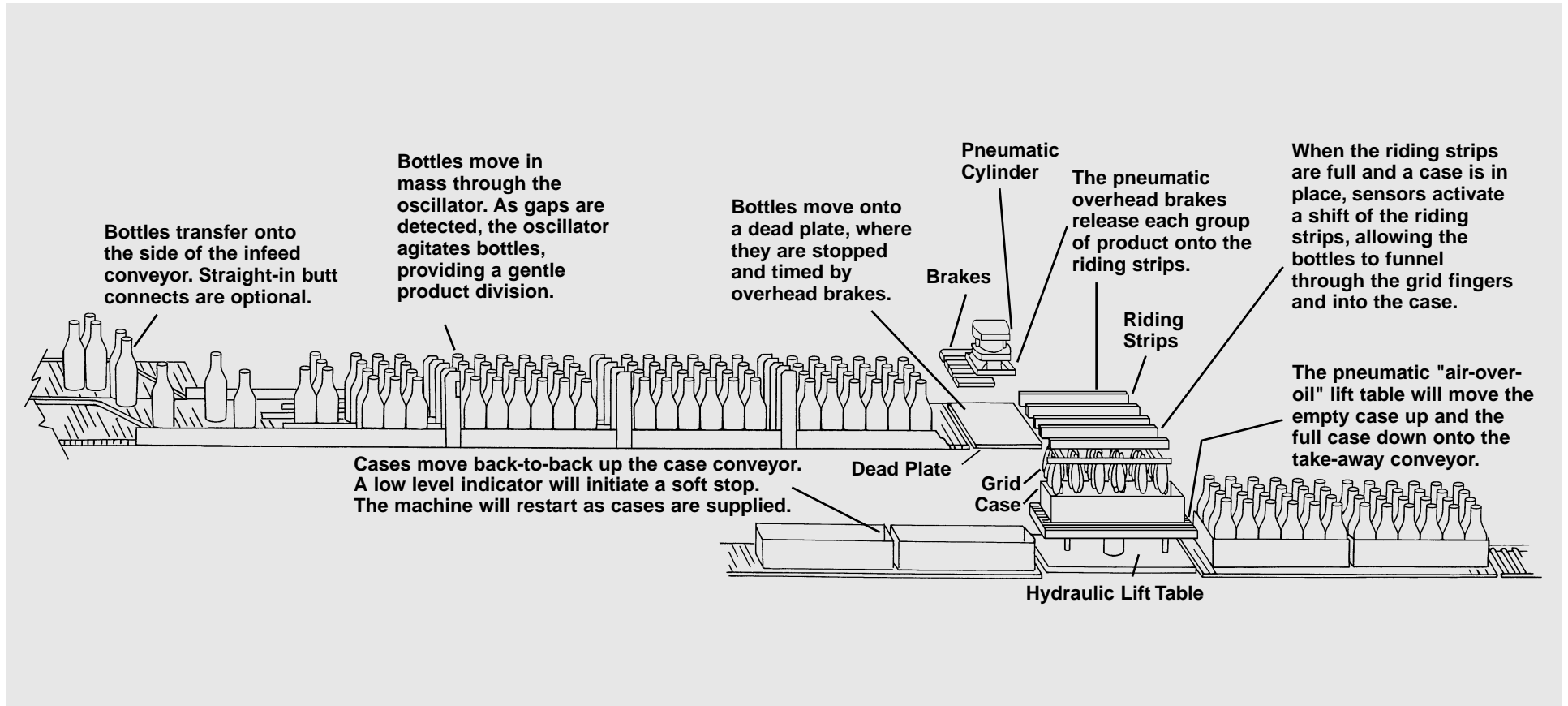
Operation and Maintenance Made Easy

- Quick "no-tools" changeover
- Complete interlocked guarding, designed into frame
- Easy and convenient operator controls
- Quick disconnect wires
- Low maintenance
- Stainless steel construction
- "All-inclusive" base machine competitively priced
- Modern cell-type manufacturing guarantees high quality and reliability

24 Hour Customer Service Line 1-800-628-9565

Versatron

Description of Operation



StandardKnapp

STANDARD-KNAPP, INC.

127 Main Street, Portland, CT 06480 U.S.A.

SALES PHONE: (860) 342-1100, ext. 239

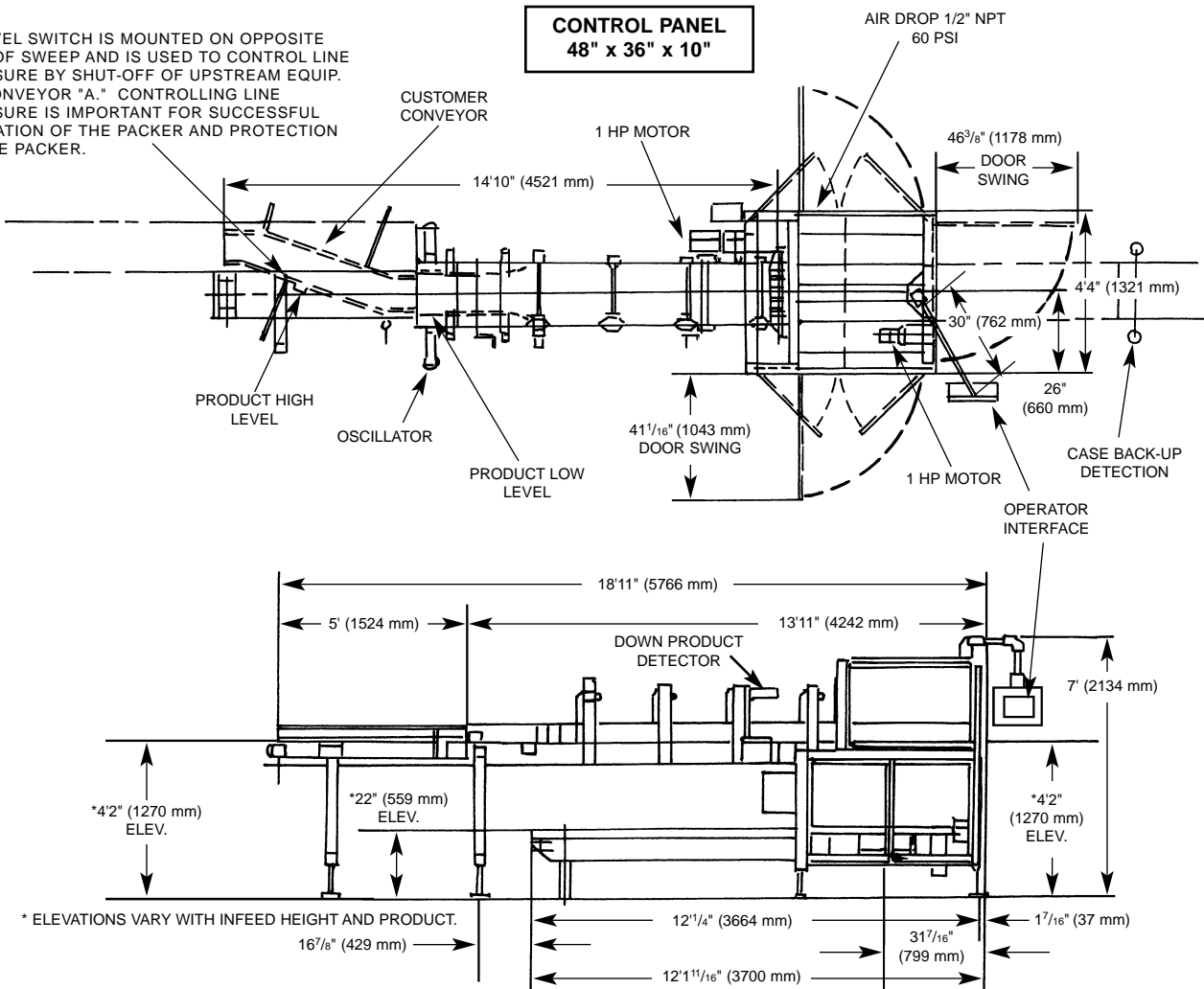
SALES FAX: (860) 342-1557

EMAIL: info@standard-knapp.com

WEB SITE: www.standard-knapp.com

Versatron Floor Plan

HI-LEVEL SWITCH IS MOUNTED ON OPPOSITE SIDE OF SWEEP AND IS USED TO CONTROL LINE PRESSURE BY SHUT-OFF OF UPSTREAM EQUIP. OR CONVEYOR "A." CONTROLLING LINE PRESSURE IS IMPORTANT FOR SUCCESSFUL OPERATION OF THE PACKER AND PROTECTION OF THE PACKER.



Specifications

Speed: Up to 35 cpm[†]

Cases:

- Plastic, corrugated, wood
- HSC, RSC, Tablock, tray
- Height from 1.5 to full bottle height
- Tandem, double tier

Infeed: Butt connect; side sweep onto 5' infeed extension

Controls: 24 volts DC with an A-B SLC-500

Main Control Panel: Free-standing, NEMA 12; one electrical connection, 15 amp @ 460V

Operator Interface: On swivel boom, rotates around machine; optional smart screen display

Discharge: Powered conveyor by customer

Air Connection: 60-80 PSIG, 1/2" NPT

Enclosures: NEMA 12

Motors: Two 1 HP motors; packer motor with an A-B 1333 frequency drive

Stainless steel packer frame and infeed

Standard-Knapp is committed to continuous product improvement. Specifications are subject to change without notice.

[†] Depending on product and cases.



StandardKnapp

STANDARD-KNAPP, INC.

127 Main Street, Portland, CT 06480 U.S.A.

SALES PHONE: (860) 342-1100, ext. 239

SALES FAX: (860) 342-0782

EMAIL: info@standard-knapp.com

WEB SITE: www.standard-knapp.com