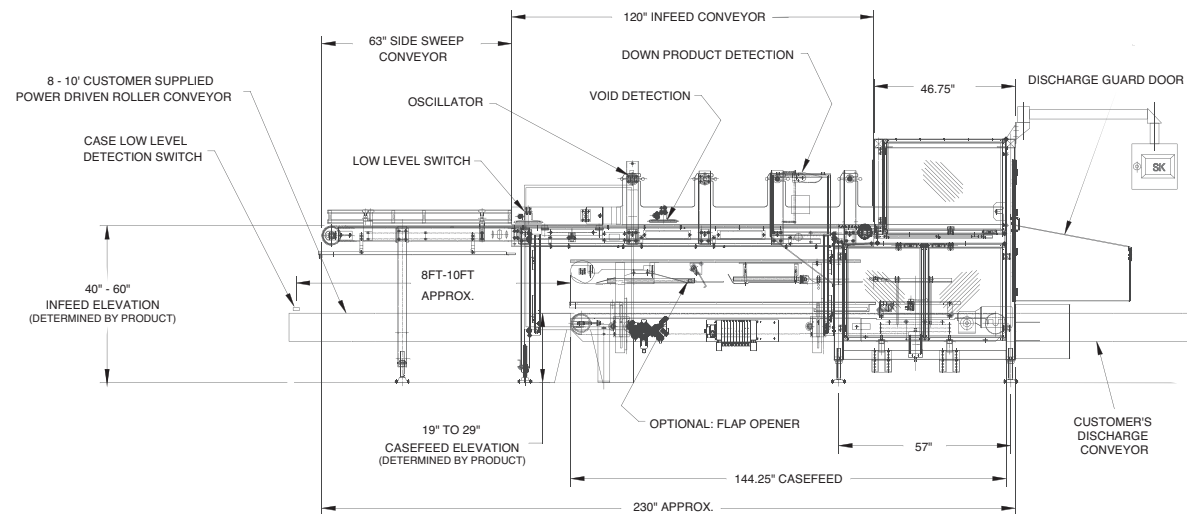


# StandardKnapp

## EZ Floor Plans



## EZ Case Packer Standard Features\*

The Standard-Knapp EZ Case Packer features a stainless steel packer and case feed frame, and *Air Over Oil* lift table.

Model:	939EZ Case Packer	Controls:	Allen-Bradley CompactLogix – 24 Volts
Speeds:	Up to 28 cpm** Up To 40 cpm Tandem**	Main Control Panel:	Nema 4
Case Types:	Plastic, Corrugated, HSC, RSC, Tablock, Tandem, Double Tier	Interface:	Allen-Bradley PanelView 600+ Color
Infeed Style:	Butt Connect or available Side Sweep onto 5' infeed extension	Electrical Supply:	230/460V – 60 HZ
Product Infeed Chain:	15" wide Rexnord, 1" pitch	Air Supply:	70 psi with 1/2" NPT
Product Lanes:	1 – 8 lanes	Lubrication:	Point lubrication
Case Sizes:	6" – 18" wide	Infeed Drive:	2 HP with VFD
Tray Height:	3" – full bottle height	Casefeed Drive:	1 HP with VFD
Industries Served:	Food, beverage, personal care	Controller:	Powerflex 525 VFD

\* Standard-Knapp is committed to continuous product improvement. Specifications are subject to change without notice.

\*\* Depending on Product and Cases

## Optional Equipment

- Flap Opener
- Panelview 1000+ with Graphically Driven HMI



© Copyright 2018 Standard-Knapp, Inc. – 1217-250

**STANDARD-KNAPP, INC.**  
 63 Pickering Street, Portland, CT 06480 U.S.A.  
**SALES PHONE:** (860) 342-1100, ext. 239  
**SALES FAX:** (860) 342-1557  
**EMAIL:** info@standard-knapp.com  
**WEB SITE:** www.standard-knapp.com



# EZ Case Packer

The low-cost alternative where quality and reliability matter





The StandardKnapp EZ Case Packer combines proven and reliable case packing technology in our most affordable package. The EZ Case Packer is the “little brother” of our industry standard Versatron™ family of case packers. It offers the same robust quality, flexibility and adaptability, while operating at speeds of up to 28 cases per minute. Our patented Snap-in Grid technology makes changeover an easy, one-man operation. The use of our air-over-oil lift table to control the descent of product into the case maintains design simplicity without sacrificing control.

**The EZ Case Packer – It fits your demand, it fits your floor plan, it fits your budget.**

**Robust Construction**  
Stainless steel tubular frame

**High Reliability**  
Designed for 24/7 operation

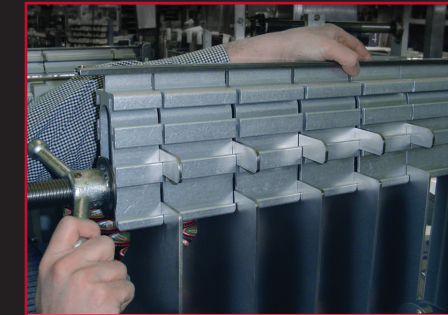
**Simple Operation**  
Fast, easy operation

**Easy Walk-by Maintenance™**  
See-through safety guarding

**Flexible and Adaptable**  
To future applications

**Quality Fit and Finish**

# EZ Case Packer



## EZ Changeover

Simple, color-coded, by-the-numbers changeover is easy to perform, requires no tools and is very repeatable – run another product in as little as fifteen minutes



## EZ Walk-by Maintenance™

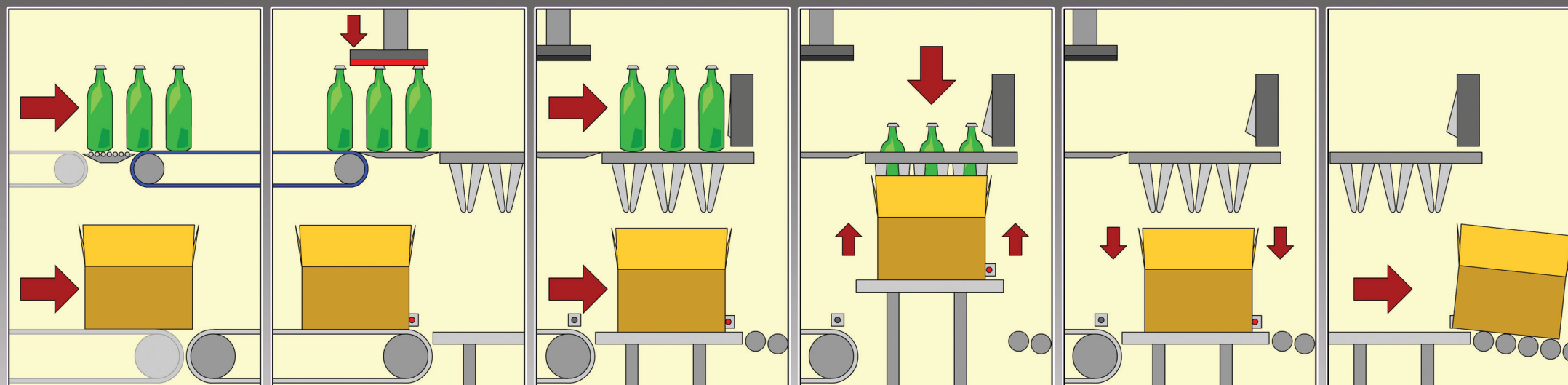
See-through guarding and easy-access lubrication and inspection points make maintaining our machines a breeze



## EZ Operation

Our simple touchscreen operator interface is both easy to learn and easy to use

## The Packaging Process Explained



The product and the empty case enter the machine via customer conveyors

Overhead braking and case braking is applied to allow the previous slug of product and case to evacuate

The product moves into grid area and is detected and stopped, case moves onto lift table and is detected and stopped

The lift table raises the case up to meet the product, which is dropped through the grid into the case

The case, now filled with product, is lowered by the lift table

The packed case exits the machine via the discharge conveyor